

Manual switch-on

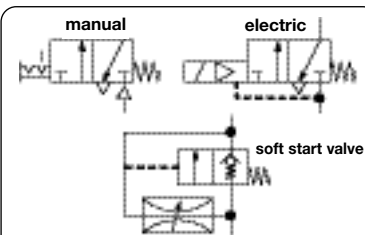
Manual switch-on/off valve which relieves at switch-off. Tapped exhaust with connection thread G $\frac{1}{8}$ or valve G $\frac{1}{4}$. Valve can be protected from unauthorised tampering by provided padlock. Wall mounting is possible through two drilled holes in the body. Maximum supply pressure is 15 bar.

Electric switch-on valve

The electrically-operated 3-port/2-way valve switches the air flow on or off. As standard, it is supplied with a miniature valve or alternatively with a CNOMO valve and can be operated purely in a pneumatic way as option. Wall mounting is possible through two drilled holes in the body. Tapped exhaust with connection thread G $\frac{1}{8}$ or G $\frac{1}{4}$. Maximum supply pressure is 3 to 10 bar.

Soft start valve

The soft start valve slowly pressurizes the system and switches over to full scale operation when 60% of the nominal pressure is reached. The pressure raising period can be set by an adjusting screw on top of the valve. Wall mounting is possible through two drilled holes in the body. Maximum supply pressure is 3 to 10 bar.



pressure valves



V052 manual switch-on valve



S052 electric switch-on valve



A052 soft start valve

Dimensions			Description	Exhaust port	Flow rate		Connection thread	Order number
A	B	C			m ³ /h*1	l/min*1		
mm	mm	mm		G			G	



Manual 3-port/2-way valve

supply pressure max. 15 bar, including padlock

V0

42	110	45	manual switch-on	G $\frac{1}{8}$	96	1600	G $\frac{1}{4}$	V042-02
63	121	36	and switch-off of the	G $\frac{1}{4}$	156	2600	G $\frac{3}{8}$	V050-03
63	121	36	compressed air circuit	G $\frac{1}{4}$	162	2700	G $\frac{1}{2}$	V052-04
75	138	42		G $\frac{1}{4}$	186	3100	G $\frac{1}{2}$	V075-04
137	138	42		G $\frac{1}{4}$	192	3200	G $\frac{3}{4}$	V080-06

Electric 3-port/2-way valve

24 V DC, 2 W, supply pressure 3...10 bar

S0

42	143	42	electric switch-on	G $\frac{1}{8}$	96	1600	G $\frac{1}{4}$	S042-02
63	145	52	and switch-off of the	G $\frac{1}{4}$	156	2600	G $\frac{3}{8}$	S050-03
63	145	52	compressed air circuit	G $\frac{1}{4}$	162	2700	G $\frac{1}{2}$	S052-04
75	154	63		G $\frac{1}{4}$	186	3100	G $\frac{1}{2}$	S075-04
137	154	63		G $\frac{1}{4}$	192	3200	G $\frac{3}{4}$	S080-06

Soft start valve

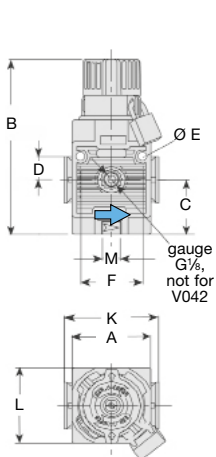
supply pressure 3...10 bar

A0

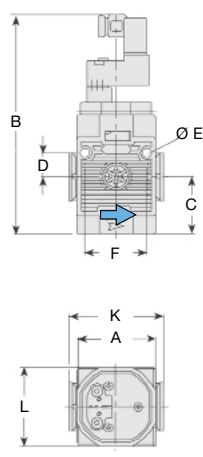
42	105	42	slow pressurizing of the		96	1600	G $\frac{1}{4}$	A042-02
63	108	52	pneumatic plant,		156	2600	G $\frac{3}{8}$	A050-03
63	108	52	delay time adjustable		162	2700	G $\frac{1}{2}$	A052-04
75	117	63			186	3100	G $\frac{1}{2}$	A075-04
137	117	63			192	3200	G $\frac{3}{4}$	A080-06

Special options, add the appropriate letter

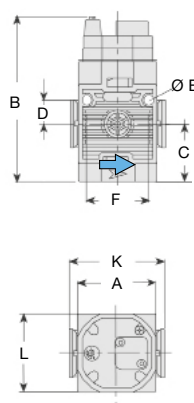
24 V AC, 2 W	input supply voltage	for S0	S0...-0.X
115 V AC, 1 W	input supply voltage	for S0	S0...-0.Y
230 V AC, 1 W	input supply voltage	for S0	S0...-0.Z
pneumatic control	C402600014, instead of electrical operation	for S0	S0...-0.P



V0 manual switch-on valve



S0 electric switch-on valve



A0 soft start valve

Series	D	Ø E	F	K	L
042	10.5	4.5	31	—	42
050/052	16	5.5	41	63	52
075	17.5	5.5	45	75	63
080	—	—	—	—	137

*1 at 10 bar supply pressure and 1 bar pressure drop

* Product group

PDF CAD
www.aircom.net



Order example:
V042-02

FRL
units



19